

# E4 1-1/4" Clamped Metallic Pumps Specifications and Performance

**FLOW RATE** (Adjustable)... 0-70 gpm (0-265 lpm)

**PORT SIZE**

Inlet..... 1.50" NPT (BSP)

Outlet..... 1.25" NPT (BSP)

**AIR INLET**..... 0.50" NPT

**AIR EXHAUST**..... 0.75" NPT

**SUCTION LIFT**.... 15' Dry/25' Wet (4.57m/7.62m)

Teflon®..... 10' Dry/20' Wet (3.05m/6.09m)

**MAX. PARTICLE SIZE** (Dia.) .....0.1875" (4.76mm)

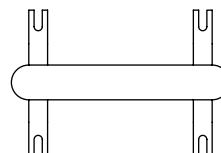
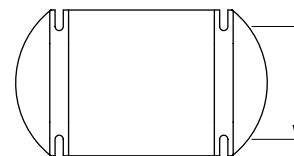
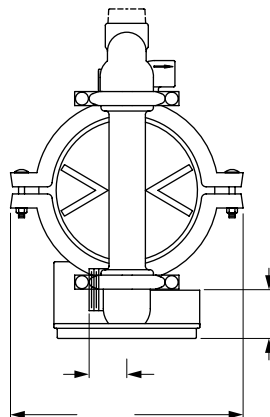
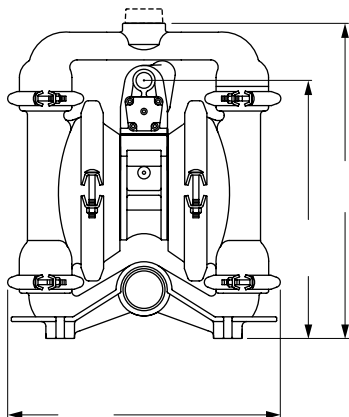
**SHIPPING WEIGHTS**

Aluminum..... 41 lbs (18.60 kg)

Cast Iron..... 57 lbs (25.85 kg)

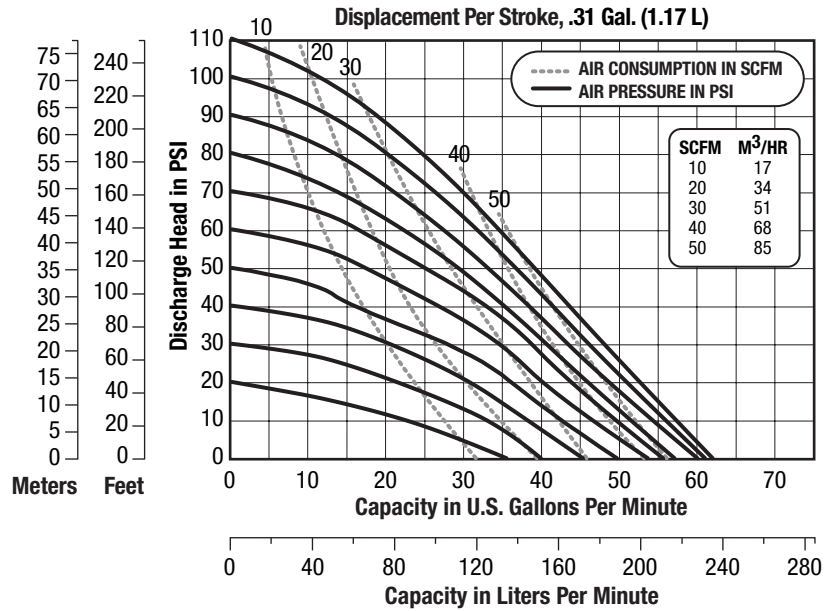
Hastelloy C..... 57 lbs (25.85 kg)

Stainless..... 57 lbs (25.85 kg)



**PERFORMANCE** Determined by actual flow meter tests.

E4



**NOTE:** For E4 pumps fitted with Teflon® diaphragms, reduce water discharge figures by 20%. Suction lift is reduced to 10' (3.05m) dry and 20' (6.10m) wet.

**CAUTION:** Do not exceed 125 psig (8.5 bars) air supply or liquid pressure.